

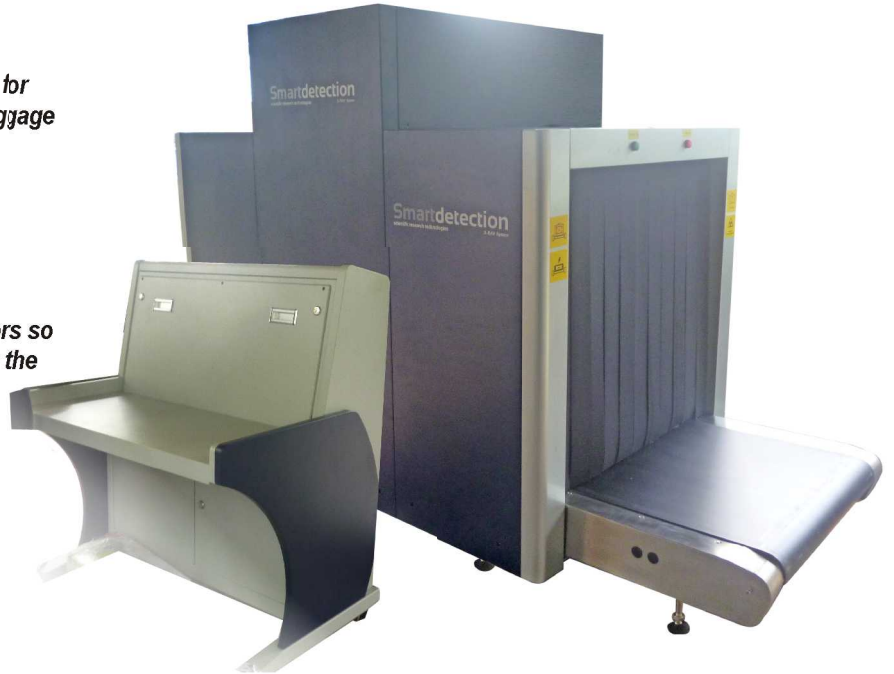
# SmartScan 100100

## X-ray Inspection System

*The dual energy SmartScan 100100 is designed for customers requiring inspections of checked baggage and small cargo.*

*The low convey allows for easy loading and unloading of parcels and small cargo.*

*Dual energy imaging provides automatic color coding of materials with different atomic numbers so that screeners can easily identify objects within the parcel.*



**High-End image performance system with Advanced material identification ability :** With the dual-energy technology, the **SmartScan X-ray security system** can easily identify material and categorize it based on the arrangement: organic material (orange), inorganic (blue), mixture and lighter metal (green), which assists in detecting drug and explosive powder.

**Automatic high and Low penetration display :** High penetration display increases the contrast of the bright area in image to make the area that is easy to penetrate appear more clearly. Low penetration display increases the contrast of dark area in image to make the difficult-to-penetrate area appear more clearly.

**Operation Training Program :** It enables the X-ray system to be used as a training terminal without running parcels.

#### **OPTIONAL :**

**Threat Image Projection(TIP) :** TIP inserts digital threat images at configurable frequencies into the reliable method for continually improving the skill level of screeners and is the preferred training method used by regulatory agencies worldwide.

**Screener Assist Function :** This is a real time threat identification operator alert software package that automatically screens for potential explosives and other threats by utilizing advanced material classification and atomic density analysis by drawing a colored box around the area of suspicion. If multiple threats are perceived in a single image, the

system will draw multiple boxes in the suspect areas. Then Screener Assist software is designed to assist vigilant operators in locating and identifying threats.

**Network Management System(NMS) :** Allows a supervisor to monitor the performance of many X-ray checkpoints in a large facility from a single location.

*The SmartScan 100100 is a smartly designed and state-of-the-art X-ray Inspection System for the scanning of large size objects up to 100 cm x 100 cm (W x H), such as oversized and heavy Parcels, Baggage, Luggages. The low height and sturdy conveyor belt design makes it very convenient for heavy and large objects to be easily placed for scanning.*

*Despite the large size unit, the SmartScan 100100 is a mobile unit that can be relocated to increasing security demand areas by security operators whenever necessary.*

*The SmartScan 100100 meets and exceeds the needs of sensitive areas in airports, stations, customs, ports, mailrooms, embassies, stadiums, exhibitions, courthouses, hospitals, prisons and other government as well as commercial locations.*

*The safety benefit features of the SmartScan 100100 include Low X-ray leakage dose rate that assures safety of the operators and the public. All of the SmartScan X-ray security system is carefully engineered to reach the minimal X-ray leakage. The environment radiation dose rate around the device is close to the natural background and complies with all published National/International standards.*

#### **STAND FEATURES**

- Multi-energy Imaging (3 color)
- Density Threat Alert
- Variable Edge Enhancement
- High/Low Penetration
- Organic/Inorganic Stripping
- Black/White\* Color Viewing
- View Previous Bag
- Baggage Counter
- Search Indicator
- Date/Time Display
- Full Diagnostic Built In Test Facility
- Operator Training Program
- Bi-direction scanning
- Density Alarm
- User Management
- Automatic / manual Image Archiving
- Print Function

# Technical Data

## SmartScan 100100

### Physical Specifications

Dimensions (LxHxW)	3,960mm x 1,800mm x 1,270mm
Tunnel Size (WxH)	1018mm x 1010mm
Conveyor speed	0.20 m/s
Maximum Load	200kg evenly distributed
Approximate Weight	950kg
Operating Voltage	220V AC(±10%) 50±3Hz
Power Consumption	1KVA

Unit is mounted on heavy casters for ease of movement

### X-ray Generator And Image Performance

Wire Resolution	40AWG (0.0787mm of wire) 44SWG
Spatial Resolution	1.0mm (horizontal), 1.0mm (vertical)
Steel Penetration	40mm guaranteed
Material Separation	Low Z, Medium Z, High Z to 0.5 Z accuracy
Cooling	Sealed oil bath with forced air
Anode Voltage	140-160kv(adjustable)

### Optional Features

- Threat Image Projection
- TIP Network
- Power Conditioner
- Remote Workstation
- Smart Energy Saving System
- Conveyor Accessories
- UPS (Uninterrupted Power Supply)
- Crisis Analyzing System
- Exit Conveyor Accessories
- Import Conveyor Accessories

### BAGGAGE AND PARCEL INSPECTION

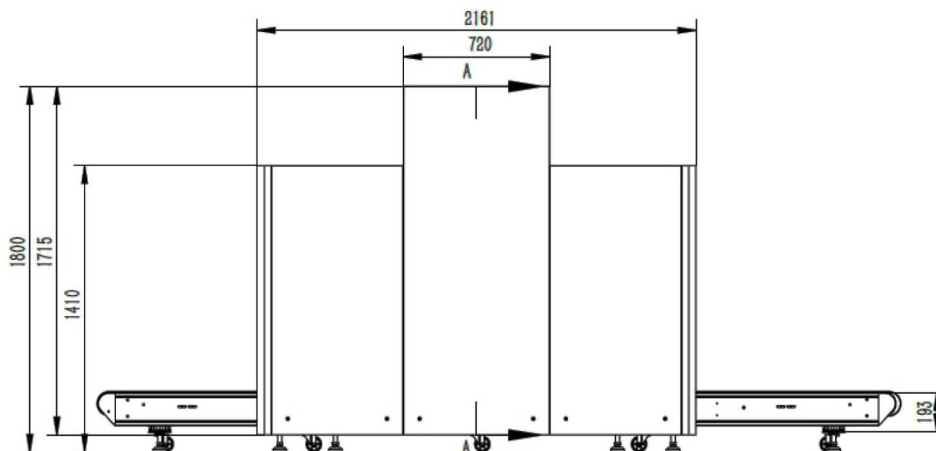
#### Operating Environment

Storage Temperature	-200°C to 60°C
Operating Temperature	0°C to 45°C
Relative Humidity	5 to 95% non-condensing

#### Health & Safety

Film Safety	In accordance with ASA/IS1600 film safe standard
CE Compliance	Yes
ISO 9001:2008	Yes
OHSAS18001:2007	Yes
Ministry of Public Security Approval	Yes

All X-ray Machines comply with applicable domestic and international health and safety regulations. Maximum leakage radiation less than 0.05mR/hr in contact with outer panels.



■ For detail inquiries, please contact :

#### PT. Professtama Teknik Cemerlang

#### PT. Professtama Teknik Cemerlang

Kompleks Golden Ville Blok 88DI, Jl. Daan Mogot Dua,  
Kepa Duri, Jakarta 11510 - Indonesia  
Telp. +62-21-5671935, +62-21-5641142 | Fax. +62-21-5671938  
SMS (Customer Care) : +62 81510757515  
E-mail: info@professtama.com  
website: www.professtama.com

